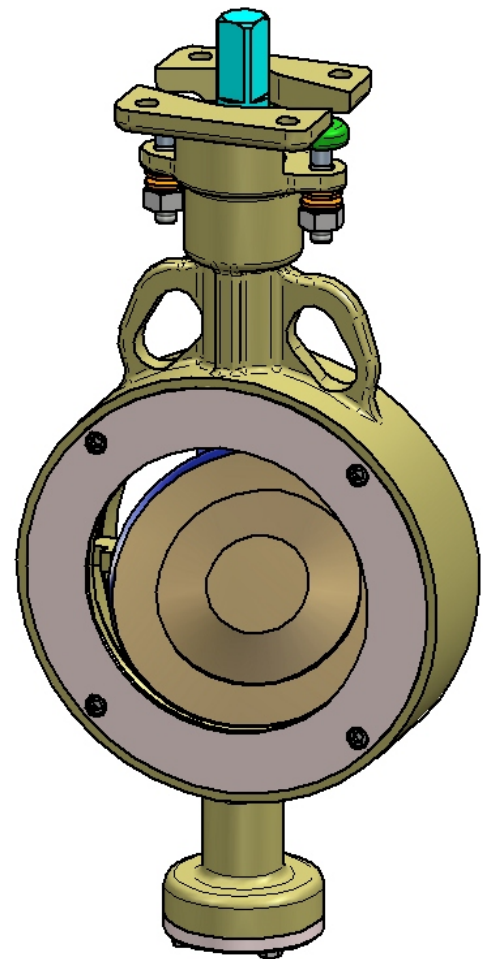


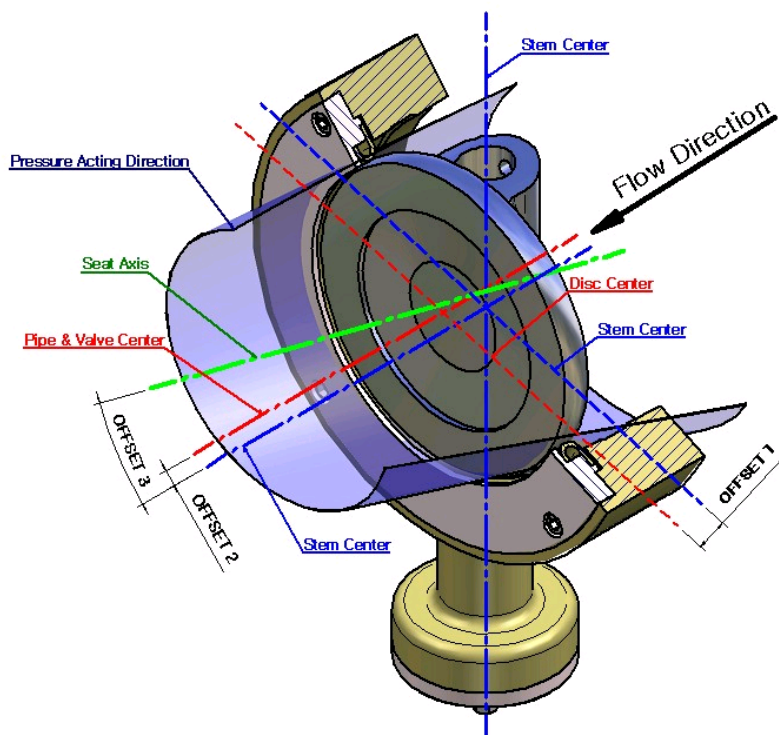
Triple Offset Butterfly Valve

Standard Spec.

- Valve Size : 2"(50A)~64"(1600A).
- Body Rating.
 - ANSI CLASS 150#, 300#, 600#, 900#, 1500#.
 - ISO/DIN PN 10, 16, 25, 40, 64, 100.
 - JIS 10K, 20K, 30K, 40K, 63K.
- Bonnet Type.
 - Plain, Extension, Cryogenic.
- Face To Face.
 - API 609 Category A.
 - ISO 5752 SERIES 20.
- Max. Working Temperature :
 - Up to 600°C (Cryogenic Rang -196°C).
- End Connection.
 - Wafer, Lugged, Flange, Butt Welding.
- Testing.
 - API 598, MSS SP-61, BS 6755.
- Actuator Direct Mounting.
 - ISO 5211.



Triple Offset Geometry.

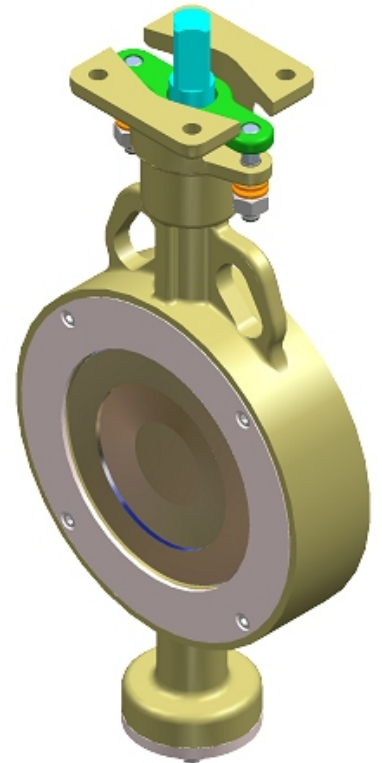
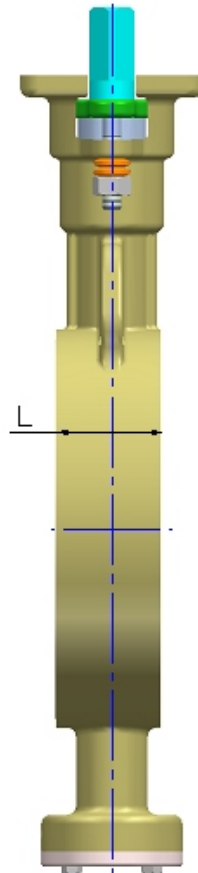
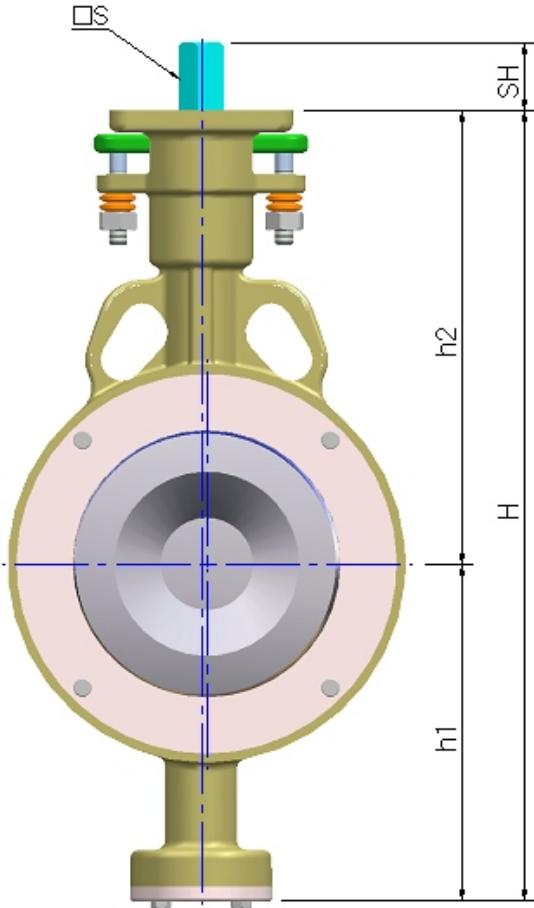
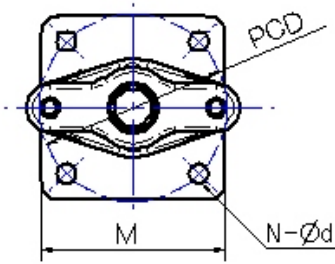


OFFSET 1 : The shaft is offset behind the seat axis to allow complete sealing contact around the entire seat.

OFFSET 2 : The shaft centerline is offset from the pipe and valve which provides interference free opening and closing of the valve.

OFFSET 3 : The seat cone axis is offset from the shaft centerline to eliminate friction during closing and opening and to achieve uniform compressive sealing around the entire seat.

Dimension [Wafer Type].



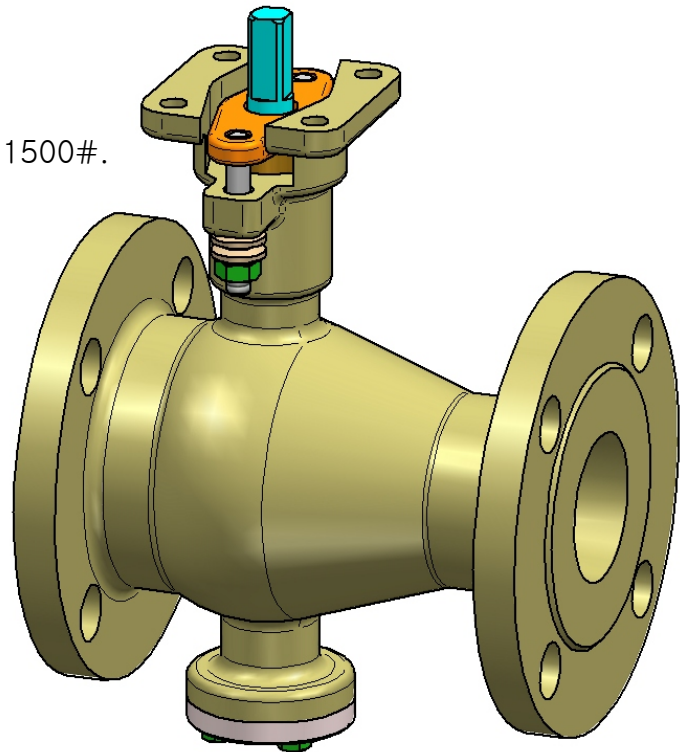
* Bonnet Connect :
 => Flange or welding Type.
 * Contact us size 24" or more.
 * Extension, contact us Cryogenic.

Size		L			h1	Plain		□S	SH	Mounting Pad			Extension		Cryogenic	
Inch	mm	150#	300#	600#		h2	H			□M	PCD	N-Ød	h2	H	h2	H
3"	80	48	48	54	130	155	285	□11	14	□70	70	4-Ø11	305	435	705	835
4"	100	54	54	64	158	180	338	□11	14	□70	70	4-Ø11	330	488	730	888
5"	125	56	59	70	181	200	381	□14	17	□92	102	4-Ø13	350	531	750	931
6"	150	57	59	78	188	244	432	□17	20	□92	102	4-Ø13	394	582	794	982
8"	200	64	73	102	210	265	475	□17	20	□110	102	4-Ø13	415	625	815	1025
10"	250	71	83	117	265	297	562	□22	25	□110	102	4-Ø13	447	712	847	1112
12"	300	81	92	140	304	349	653	□27	30	□140	140	4-Ø19	499	803	899	1203
14"	350	92	117	155	322	361	683	□27	30	□140	140	4-Ø19	511	833	911	1233
16"	400	102	133	178	353	442	795	□36	39	□165	165	4-Ø23	592	945	992	1345
18"	450	114	149	200	388	472	860	□36	39	□165	165	4-Ø23	622	1010	1022	1410
20"	500	127	159	216	417	506	923	□36	39	Ø300	254	8-Ø19	656	1073	1056	1473
24"	600	154	181	232	468	530	998	□46	49	Ø300	254	8-Ø19	680	1148	1080	1548

Easy V-Ball Valve [Side Entry]

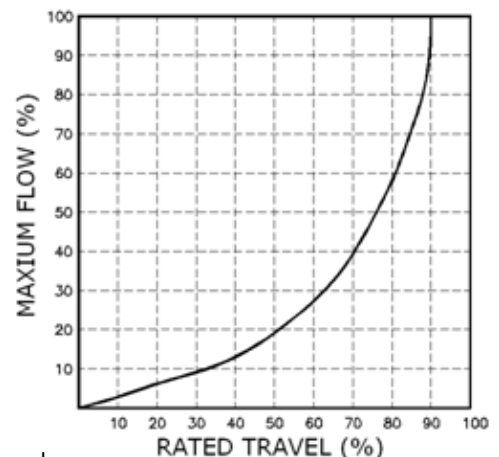
Standard Spec.

- Valve Size : 1/2"(15A)~14"(350A).
- Body Rating.
 - ANSI CLASS. 150#, 300#, 600#, 900#, 1500#.
 - ISO/DIN PN 10, 16, 25, 40, 64, 100.
 - JIS 10K, 20K, 30K, 40K, 63K.
- Bonnet Type.
 - Plain, Extension, Cryogenic.
- Face To Face.
 - ASME B16.34
 - API 6D.
 - Shot Face to Face (Neles)
- Max. Working Temperature :
 - Up to 600°C (Cryogenic Rang -196°C)
- End Connection.
 - Flange, Wafer, Butt Welding.
- Testing.
 - API 598, MSS SP-61, BS 6755.
- Actuator Direct Mounting.
 - ISO 5211.

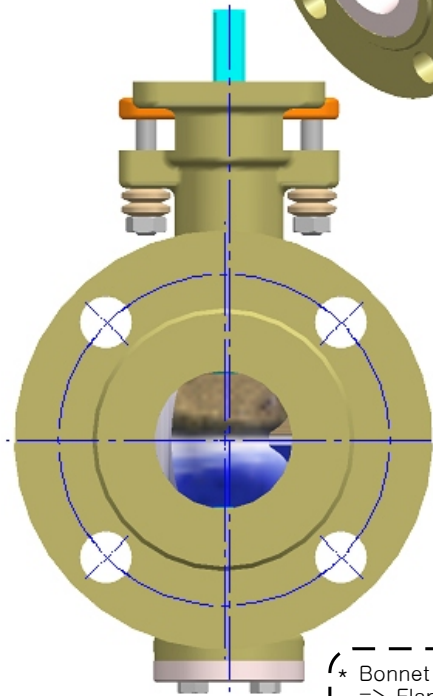
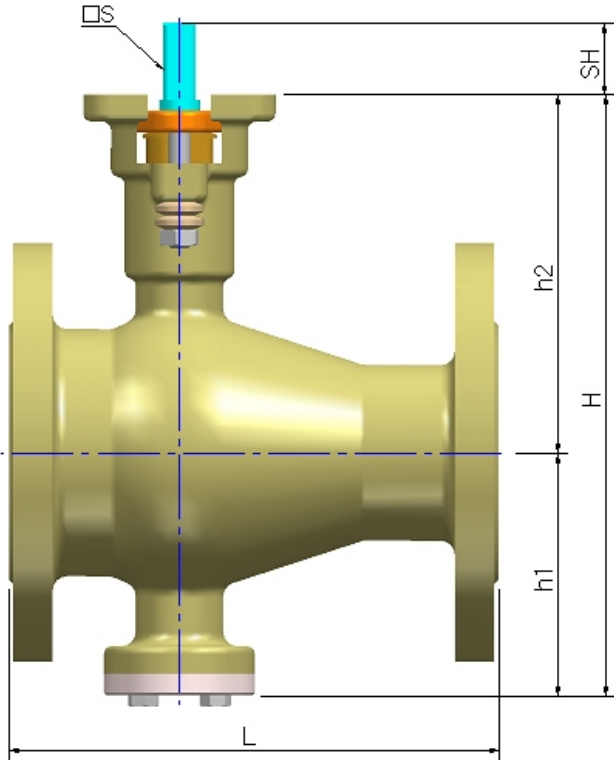
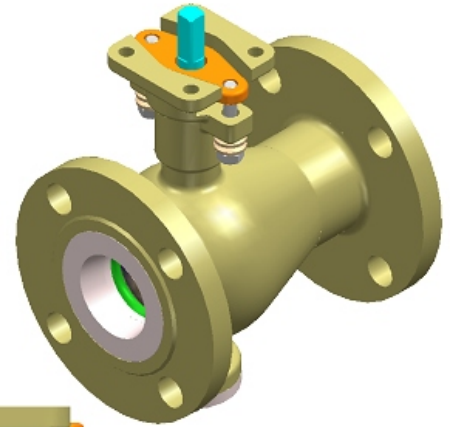
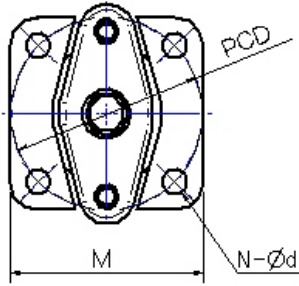


Performance.

- Excellent Flow Control Range Ability.
- Economical Price Than Other Control Valve.
- High CV Body Size Ratio.
- Full Bore.
- Dual Characteristics.
- There Is No O-Ring In Seat Ring.
- Globe Valves Compared With 50% More Space Efficient.
- Almost No Torque Because Of Double Offset.
- You Can Use Both For Soft Seat And Metal Seat By Replace.
- Swing Through And Tight Shut-Off Seated Trim Designs.
- Full Range Of Body And Trim Material Options, With Available Of Hard Facings.
- Self-Centering And Tight Seating.
- One Piece Body.



Dimension [Flange Type].



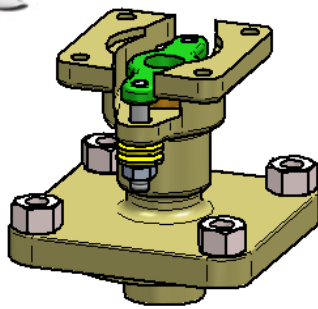
* Bonnet Connect :
=> Flange or welding Type.
* Extension, contact us Cryogenic.

Size		L			h1	Plain		□S	SH	Mounting Pad			Extension		Cryogenic	
Inch	mm	150#	300#	600#		h2	H			□M	PCD	N-Ød	h2	H	h2	H
1/2"	15	108	140	165	71	99	170	□11	14	□70	70	4-Ø11	249	320	649	720
3/4"	20	117	152	190	71	99	170	□11	14	□70	70	4-Ø11	249	320	649	720
1"	25	127	165	216	71	104	175	□11	14	□70	70	4-Ø11	254	325	654	725
1 1/2"	40	165	190	241	76	112	188	□11	14	□70	70	4-Ø11	262	338	662	738
2"	50	178	216	292	91	119	210	□11	14	□70	70	4-Ø11	269	360	669	760
2 1/2"	65	190	241	330	96	127	223	□11	14	□70	70	4-Ø11	277	373	677	773
3"	80	203	283	356	112	150	262	□14	17	□92	102	4-Ø13	300	412	700	812
4"	100	229	305	432	131	166	297	□14	17	□92	102	4-Ø13	316	447	716	847
5"	125	356	381	508	154	201	355	□17	20	□125	125	4-Ø15	351	505	751	905
6"	150	394	403	559	180	234	414	□22	25	□140	140	4-Ø19	384	564	784	964
8"	200	457	502	660	228	291	519	□27	30	□165	165	4-Ø23	441	669	841	1069
10"	250	533	568	787	282	320	602	□36	39	□165	165	4-Ø23	470	752	870	1152
12"	300	610	648	838	316	366	682	□36	39	Ø300	254	8-Ø19	516	832	916	1232
14"	350	686	762	889	345	408	753	□46	49	Ø300	254	8-Ø19	558	903	958	1303
16"	400	762	838	991	364	477	841	□46	49	Ø350	298	8-Ø23	627	991	1027	1391

Easy V-Ball Valve [Top Entry]

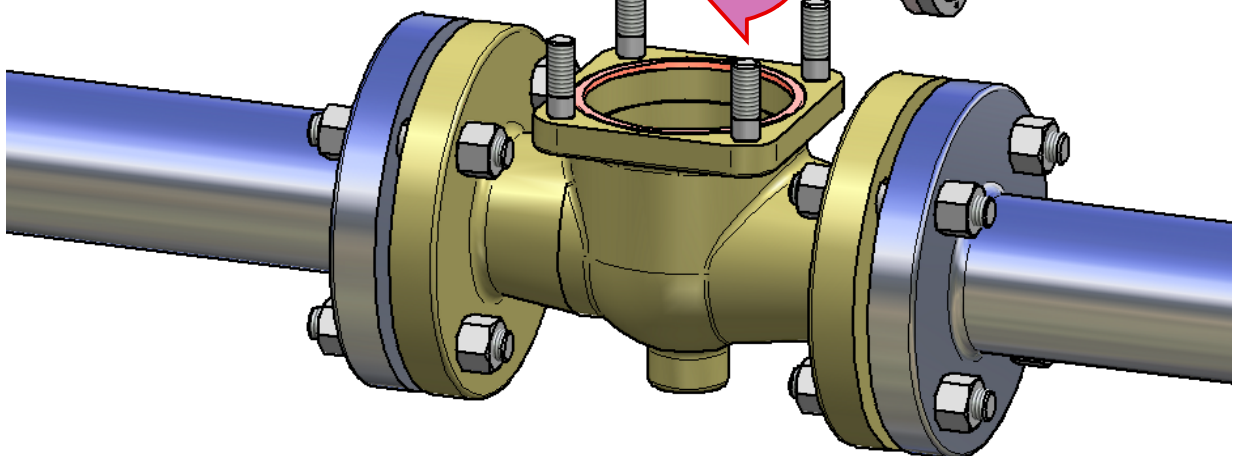
Main Features.

- I Have The Same Performance As Side Entry V-Notch Valve.
(Adjustment Capability, Large Flow Rate, Economy)
- Top Entry Design , Fully Maintainable On Line
- Low Dead Band Construction (One Pieces Stem And Ball)
- High Cv Value : Good Range-ability.
- EQ % Cv Characteristic.
- V-Ball Customized To Suit Specific Cv Curve
- Low Noise V-Ball Design.
- Suitable For Throttling Service For Both Gas And Liquid.
- Unidirectional And Bidirectional Design Available.
- Extremely Wide Selection Of Materials For Both Body And Internals, Including :
Carbon Steel, Low Alloy Steels, Stainless Steels, Duplex 22/25 Cr, Ni-Alloys And
Titanium.
- Hard Facing / Coating : Stellite, Tungsten And Chromium Carbide.

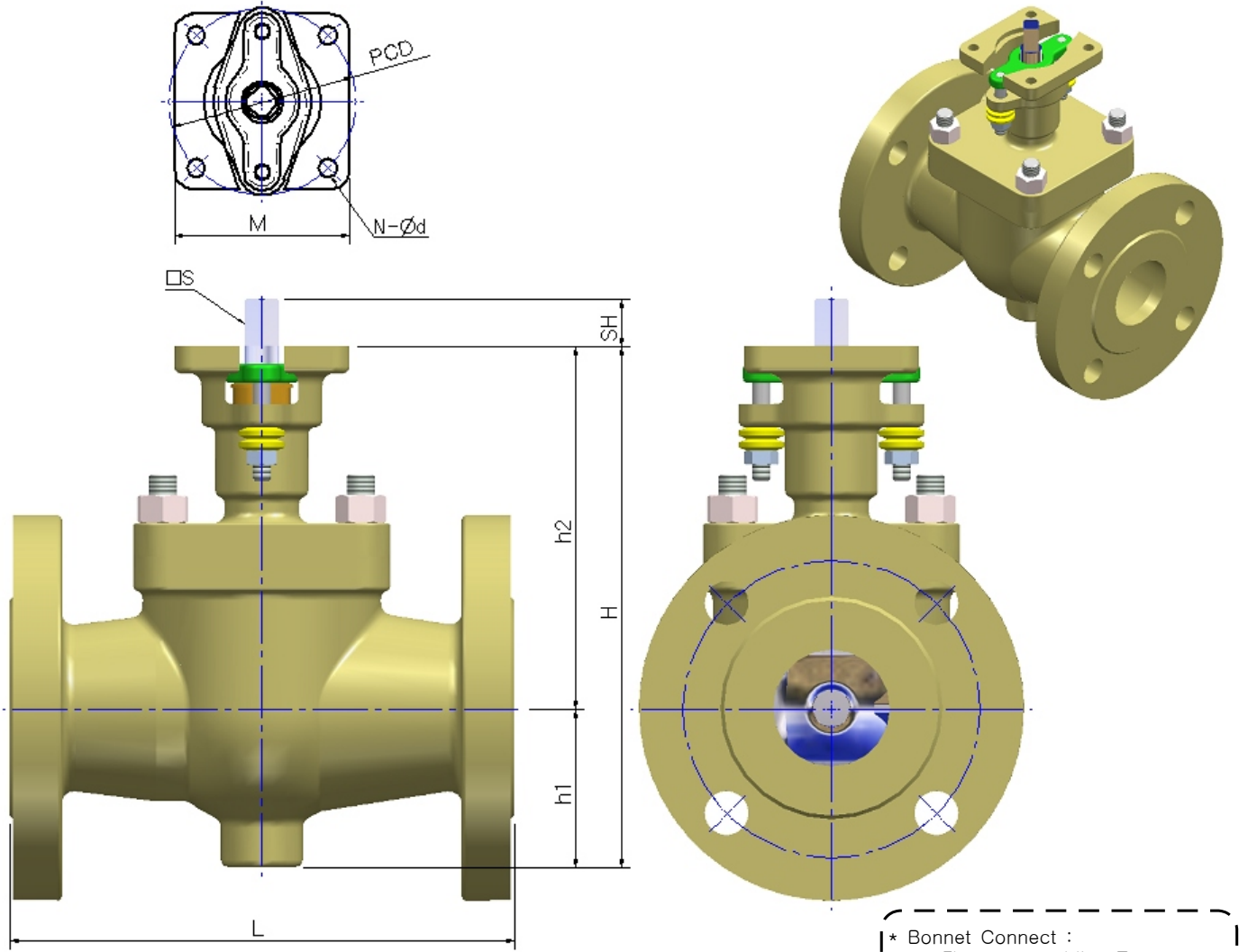


Top Entry Type....

For maintenance without removing the valve from the pipeline, the bonnet can be opened to replace the like v-ball and seat ring in the valve inner. It is very economical.



Dimension [Flange Type].



* Bonnet Connect :
=> Flange or welding Type.
* Extension, contact us Cryogenic.

Size		L			h1	Plain		□S	SH	Mounting Pad			Extension		Cryogenic	
Inch	mm	150#	300#	600#		h2	H			□M	PCD	N-Ød	h2	H	h2	H
1/2"	15	108	140	165	32	100	132	□11	14	□70	70	4-Ø11	250	282	650	682
3/4"	20	117	152	190	38	105	143	□11	14	□70	70	4-Ø11	255	293	655	693
1"	25	127	165	216	42	110	152	□11	14	□70	70	4-Ø11	260	302	660	702
1 1/2"	40	165	190	241	58	120	178	□11	14	□70	70	4-Ø11	270	328	670	728
2"	50	178	216	292	64	135	199	□11	14	□70	70	4-Ø11	285	349	685	749
2 1/2"	65	190	241	330	72	150	222	□11	14	□70	70	4-Ø11	300	372	700	772
3"	80	203	283	356	88	175	263	□14	17	□92	102	4-Ø13	325	413	725	813
4"	100	229	305	432	100	183	283	□14	17	□92	102	4-Ø13	333	433	733	833
5"	125	356	381	508	130	235	365	□17	20	□125	125	4-Ø15	385	515	785	915
6"	150	394	403	559	140	245	385	□22	25	□140	140	4-Ø19	395	535	795	935
8"	200	457	502	660	180	310	490	□27	30	□165	165	4-Ø23	460	640	860	1040
10"	250	533	568	787	220	360	580	□36	39	□165	165	4-Ø23	510	730	910	1130
12"	300	610	648	838	250	415	665	□36	39	Ø300	254	8-Ø19	565	815	965	1215
14"	350	686	762	889	290	475	765	□46	49	Ø300	254	8-Ø19	625	915	1025	1315
16"	400	762	838	991	310	550	860	□46	49	Ø350	298	8-Ø23	700	1010	1100	1410